

Specifications

Scanning Face	Simplex / Duplex
Scanning Method	1 line Color CIS (300 dpi/600 dpi), Black or White Background
Scanning Resolution*1	100 – 600 dpi (1 dpi step) and 1,200 dpi (interpolated) Optical: 300 dpi / 600 dpi (Automatic switch)
Scanning Speed*2	Binary/Color A4/Portrait, 200/300 dpi KV-N1058X Simplex: Up to 65 ppm, Duplex: Up to 130 ipm KV-N1028X Simplex: Up to 45 ppm, Duplex: Up to 90 ipm
Output Methods	Scan to Email, Scan to FTP, Scan to Shared Folder, Scan to Cloud*3, Scan to SharePoint*3, Scan to PC*4
Double-Feed Detection	Ultrasonic (The length of documents that can be detected is 70 mm (2.8 in.) or more.)
Image Compression	MH, MMR, JPEG, JPEG2000
Binary Mode Halftone	Dither, Error Diffusion
Image Control	Auto Preview, Auto Rescan, Automatic Brightness Adjustment, Multi Color Drop Out, Dynamic Threshold, White Level From Paper, Image Emphasis Gamma, Automatic Separation, Noise Reduction
Other Functions	Length Control, Barcode Detection, Patchcode Detection (Type 2, 3, T), Control Sheet Detection, Long Paper, Double Feed Skip
Documents	Width Length Thickness
Card	Weight Format Size Thickness
Feed Tray Capacity	100 sheets: 80 g/m ² [21 lb.] High-quality woodfree paper*7
Supported Operating System	Windows Vista® SP2 [32 bit/64 bit], Windows® 7 [32 bit/64 bit], Windows® 8 [32 bit/64 bit], Windows® 8.1 [32 bit/64 bit], Windows® 10 [32 bit/64 bit], Windows Server® 2003 SP2 [32 bit/64 bit], Windows Server® 2003 R2 SP2 [32 bit/64 bit], Windows Server® 2008 SP2 [32 bit/64 bit], Windows Server® 2008 R2 SP1 [64 bit], Windows Server® 2012 [64 bit], Windows Server® 2016 [64 bit]
Recommended Web Browser	Internet Explorer 11, Mozilla Firefox (latest version), Google Chrome (latest version)
Interface	USB 3.1 Gen1 (backward compatible) LAN (10Base-T / 100Base-TX / 1000Base-T) ** Wireless LAN [IEEE802.11n/g/b]
Wireless LAN	Communication standard Frequency range** (center frequency) / Channel
External Dimensions (W X D X H)	300 mm x 272 mm x 238 mm [11.8 in. x 10.7 in. x 9.4 in.] [When the exit tray is closed]
Weight	4.1 kg [9.0 lb.]
Power Requirement**10	AC 100 – 127 V, 50/60 Hz, 0.8 A AC 220 – 240 V, 50/60 Hz, 0.4 A
Power Consumption	Maximum [Scanning] Minimum [Ready] Sleep Power off
Operating Environment	Temperature: 5 °C – 35 °C [41 °F – 95 °F] Humidity: 20 % – 80 % RH
Storage Environment	Temperature: -10 °C – 50 °C [14 °F – 122 °F] Humidity: 8 % – 75 % RH
Accessories	CD-ROM: Device Driver, ISIS driver software, TWAIN driver software, User utility, Scan Button Setting Tool*12, Image Capture Plus, Operating Manual, Control sheet Quick Installation Guide, Power cord, USB cable (1.5 m [59 in.] / USB 3.1), Mixed batch card guide, Anti glare film (for **-M model)
Options	Flatbed Scanner: KV-SS081*13, Roller exchange kit: KV-SS061, Roller cleaning paper: KV-SS03, Carrier Sheet: KV-SS077, Image Capture Plus add-in (single license package): KV-SS092*14, Image Capture Plus add-in (10 license package): KV-SS093*15, Image Capture Plus OCR module for network scan 10-user license package: KV-SS094*16

Dimensions



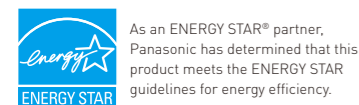
- *1 When scanning a document larger than A5 size at resolutions over 600 dpi, the scanning may fail due to insufficient memory.
- *2 The scanning speed is the maximum speed of the scanner hardware. It does not include software processing time, data transfer time, etc. The scanning speed measurement is based on Panasonic's measuring method. In case of using this unit with a LAN connection, the scanning speed may be slower due to network traffic.
- *3 Scan server must be set up. Also, it is necessary to install Image Capture Plus into the PC used as a scan server.
- *4 It is necessary to install Image Capture Plus into the target PC.
- *5 Using "Long Paper", you can scan a long document to a series of split scanned images.
- *6 Use the carrier sheet (KV-SS077) to scan passport. Depending on the condition (operating environment, dirt, scratches, etc.) of the carrier sheet or passport, the image processing function may not work properly. Scan beforehand to confirm the scanned image.
- *7 Paper less than 100 mm (3.9 in.) long or legal size paper: 75 sheets
- *8 To assure continued emission limit compliance, use only shielded LAN cable. The cable should be a CAT 5 (Category 5) or higher for 10Base-T / 100Base-TX, or CAT 5e (Enhanced Category 5) or higher for 1000Base-T.
- *9 Values differ depending on the country.
- *10 The power requirement differs depending on the country/area.
- *11 If connected to a network device (hub, router, etc.) that supports IEEE802.3az.
- *12 This tool is used when the scanner is connected via USB.
- *13 USB Scanning only.
- *14 Required to installing OCREngine for Image Capture Plus on 2 or more PCs.
(For 1 license)
- *15 Required to installing OCREngine for Image Capture Plus on 2 or more PCs.
(For 10 licenses)
- *16 To install the scan server, you need this option.

Trademarks and registered trademarks

- ENERGY STAR and the ENERGY STAR mark are registered U.S. marks.
- ISIS is a registered trademark or trademark of EMC Corporation in the United States and other countries.
- Windows, Windows Vista, Windows Server and Internet Explorer are either registered trademarks or trademarks of Microsoft Corporation in the United States and/or other countries.
- Mozilla and Firefox are registered trademarks of the Mozilla Foundation.
- Google and Google Chrome are either trademarks or registered trademarks of Google LLC.
- All other brand or product names are the property of their respective holders.

This product is designed to reduce hazardous chemical substances in accordance with the RoHS directive.

- * The power requirement differs depending on the country/area
- * All photographs in this brochure are simulated.
- * Weights and dimensions are approximate.
- * Specifications are subject to change without notice.
- * These products may be subject to export control regulations.



DISTRIBUTED BY :

Panasonic

Document Scanner: <https://panasonic.net/cns/office/products/scanner/>

Printed in Japan MG-SCNC015EN 1804NSP/ZZZ-M2

Panasonic

BUSINESS

Document Scanner

KV-N1058X

KV-N1028X

Securely Share Scanned Data with Easy-to-Use Network Scanner



Large Color Touch Screen

Flexible Network Connectivity

Advanced Network Security



Large Color Touch Screen

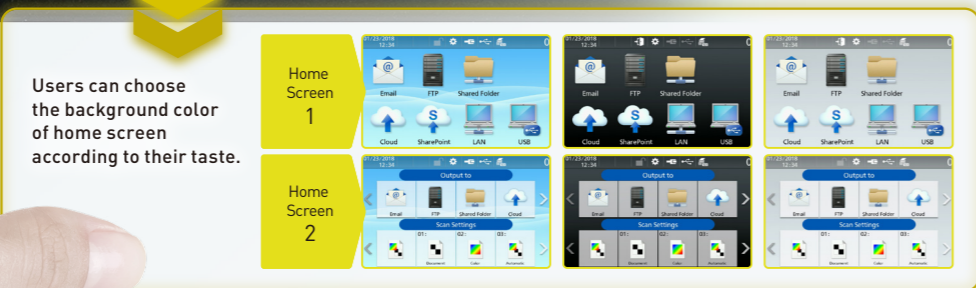
Easy-to-use 5-inch Color Touch Panel Provides Intuitive Operation

With the addition of the mounted 5-inch color touch screen on the scanner, users can adjust the settings from the touch panel and have a quick and easy access to the most used scanning operations. By selecting the desired operation from the menu, users can easily send scanned images or data via various destinations such as email.

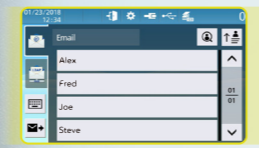


5-inch color touch screen

*The image shows the actual size of the touch screen.



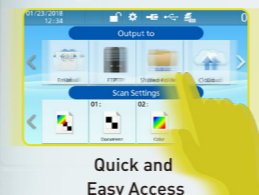
Users can choose the background color of home screen according to their taste.



Setting Up Most Used Output Destination



Preview Screen



Quick and Easy Access

Flexible Network Connectivity

Shareable Network Scanners Without PC Give Savings on Total Cost

The variable network connectivity of KV-N1058X/KV-N1028X allows you to connect the scanner to your PC or mobile device over wired or wireless connection according to your business needs. The need for large installation space, and the cost for more PC's are eliminated. This means it also saves you operation cost.

* You must set up a PC as a scan server to scan to Cloud or SharePoint.



Advanced Network Security

Advanced Security Features Yield Higher Security Level

Send your scanned data safe and secure with the advanced network security features. The KV-N1058X and the KV-N1028X come with encryption technology that supports SFTP and SSL communication. They also feature User Authentication and Access Control to provide high level of security to multiple users.

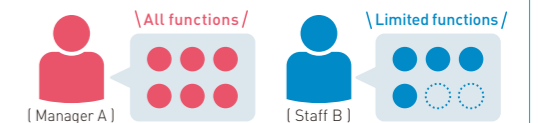
[User Authentication]

Unable to use scanner without Username or Password.



[Access Control]

You can set accessible functions for each user.



[SSL/TLS and SFTP]

Data is secured via SSL/TLS for local communication and SFTP for server communication.



Even Faster with Excellent Features

Send Scanned Data via Smartphone

Image Capture Mobile, a Panasonic original application, lets you send scanned data directly to the Cloud or to email and lets you connect up to 5 different mobile devices* such as a smartphone, tablet device, etc. to one scanner. You don't need a PC to scan anymore!

* In simple AP mode



Versatile Scanning with Various Scanning Choices

Scanning various documents is made easy with KV-N1058X/KV-N1028X. No more problem when scanning a long paper, passport, bankbook, or even embossed cards at once.

* Use the carrier sheet (KV-SS077) to scan passport and the mixed batch card guide to scan embossed cards.



Expand your Scanning Operations Through KV-SS092, KV-SS093 and KV-SS094

Installing Image Capture Plus add-ins, the KV-SS092 and KV-SS093, will allow users to use Image Capture Plus with full functions on 2 or more PCs. The KV-SS094 adds more functions and enables push scan to Cloud and SharePoint.

